



Identifying Leads with Market Lens



Questions?

Submit your questions via the chat or
by email to ClaireSpencer@evestment.com



Rich Donnellan

Strategic Initiatives
eVestment



Michael Gerson

VP Client Success
eVestment

UNDERLYING THIS ANALYSIS

SOURCE: eVestment Market Lens



57,000+
Documents



10,500+
Mandates



14,000+
Profiles of Managers,
Consultants and Investors



8,000+
Consultant Ratings
and Recommendations

- ✓ Asset allocations
- ✓ Finals presentations
- ✓ Manager evaluations
- ✓ Fee disclosures
- ✓ Portfolio reviews
- ✓ Investment recommendations



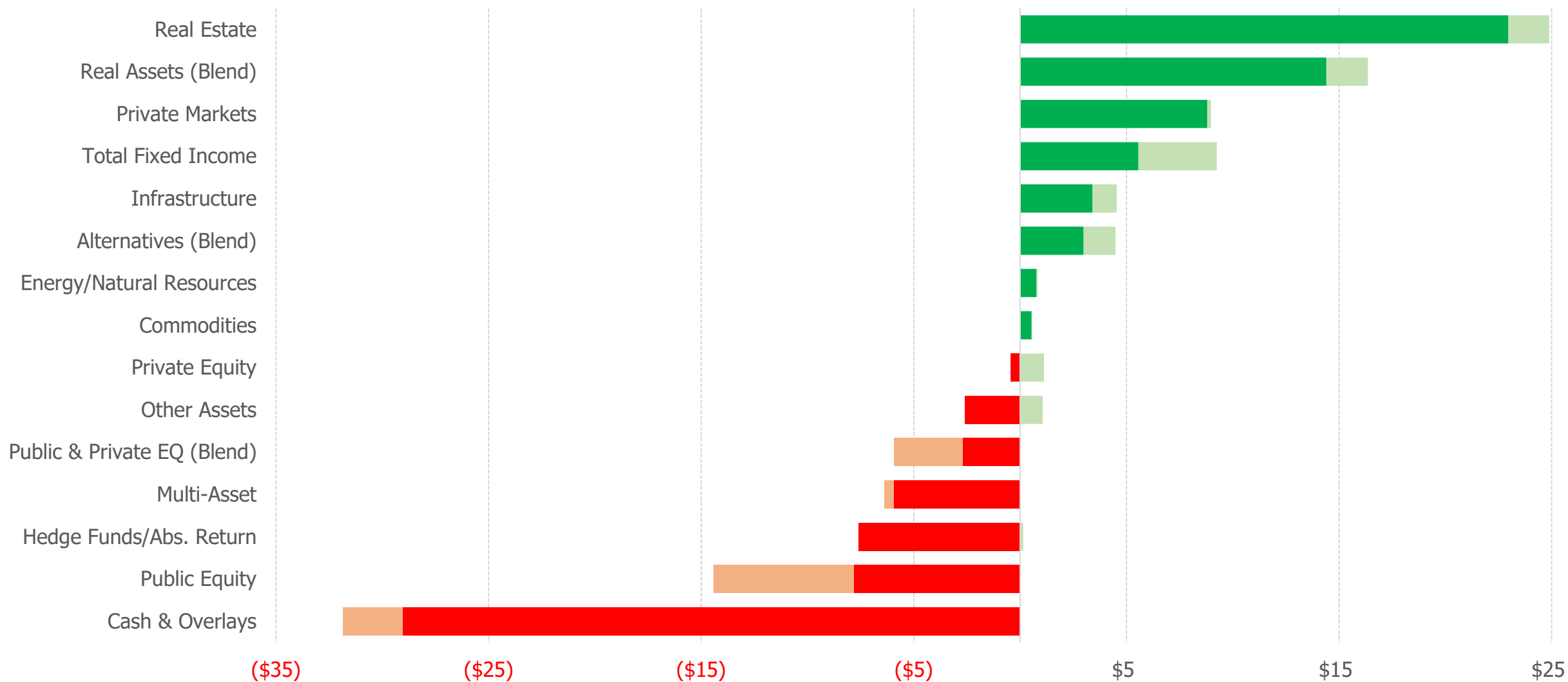
ASSET ALLOCATIONS



CURRENT VS. TARGET ALLOCATIONS: THE IMBALANCES DRIVING ALLOCATION TRENDS (\$B)



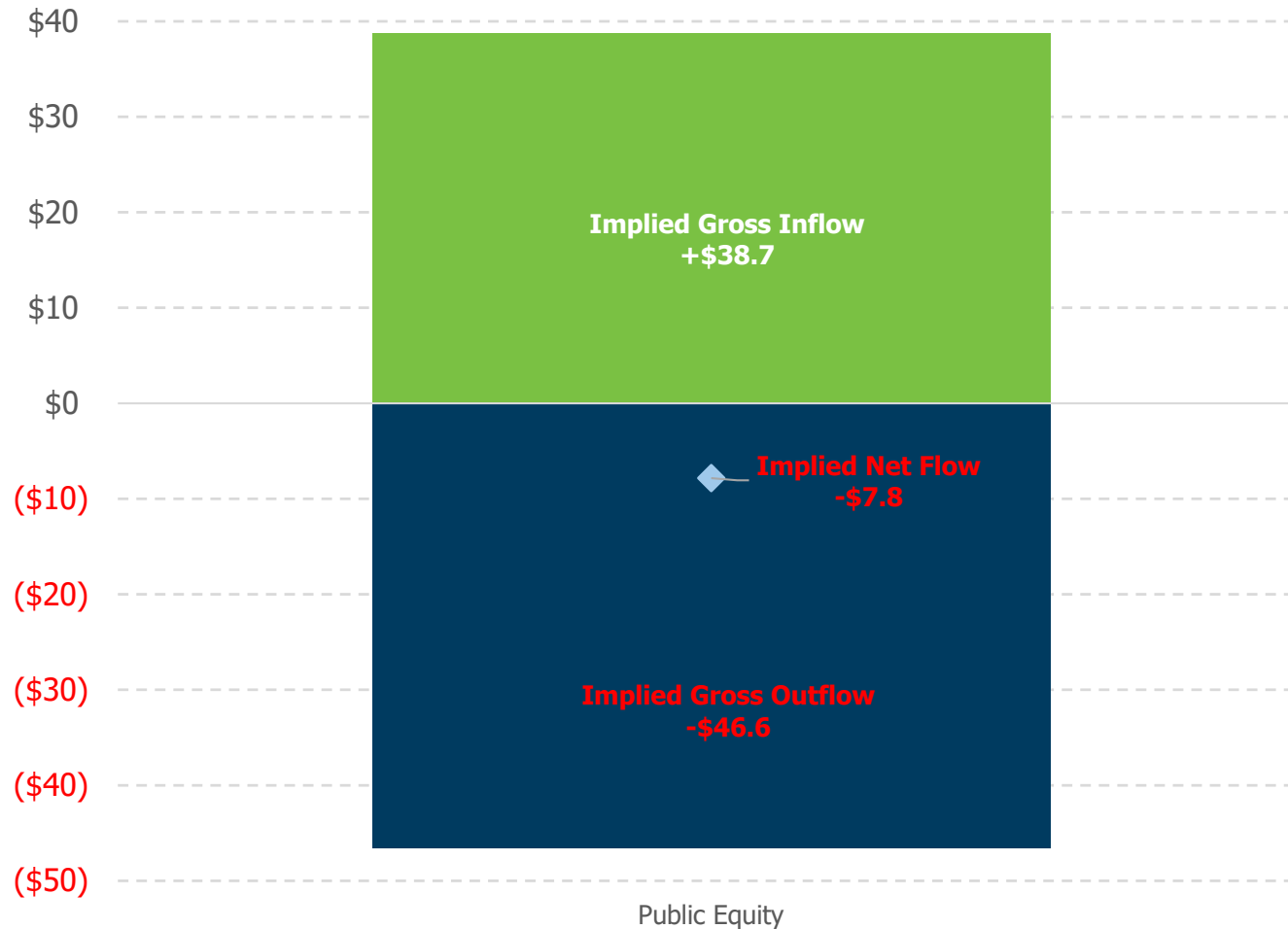
SOURCE: eVestment Market Lens



PUBLIC EQUITIES – \$39 BILLION OF POTENTIAL OPPORTUNITIES



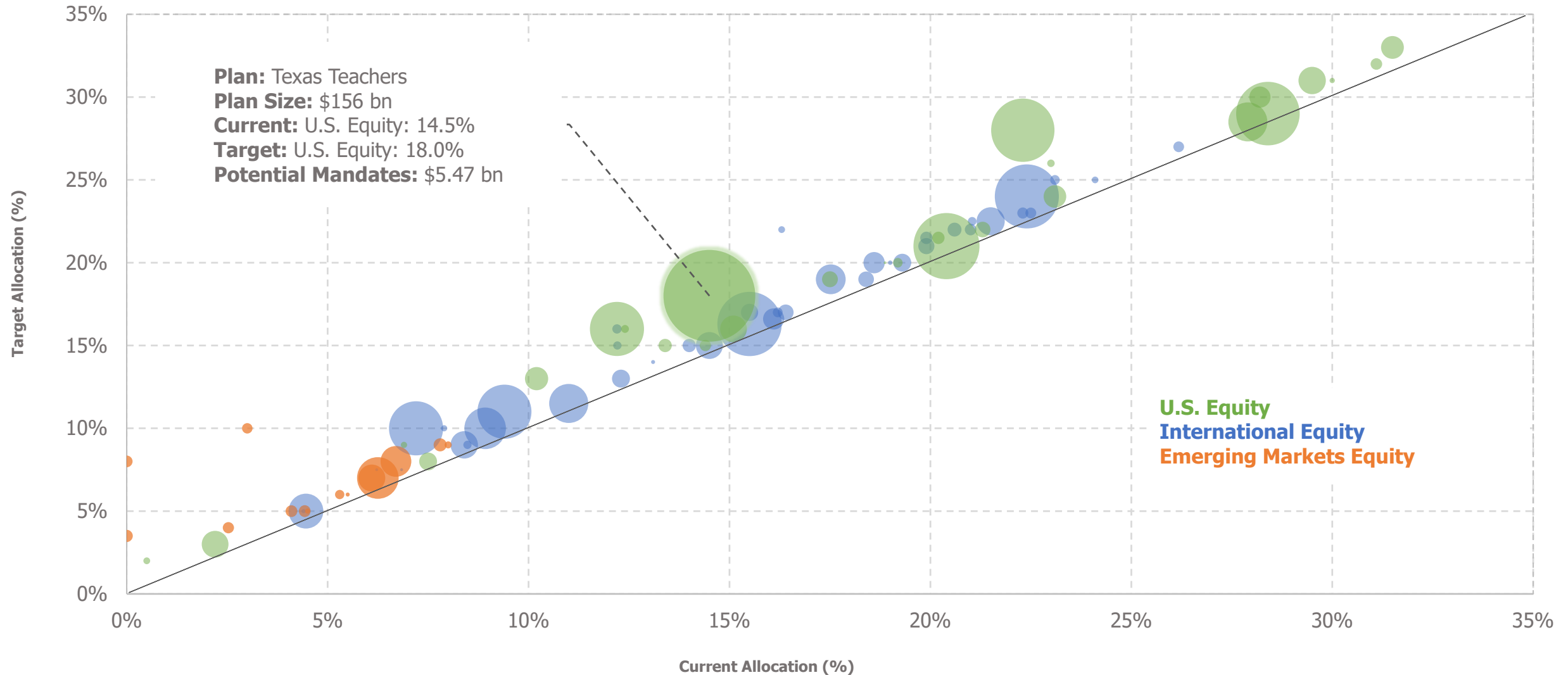
SOURCE: eVestment Market Lens



- **115** U.S. public plans under-allocated to public equities
- **181** individual opportunities accounting for an estimated \$38.7 billion

PUBLIC EQUITIES – IDENTIFYING OPPORTUNITIES

SOURCE: eVestment Market Lens





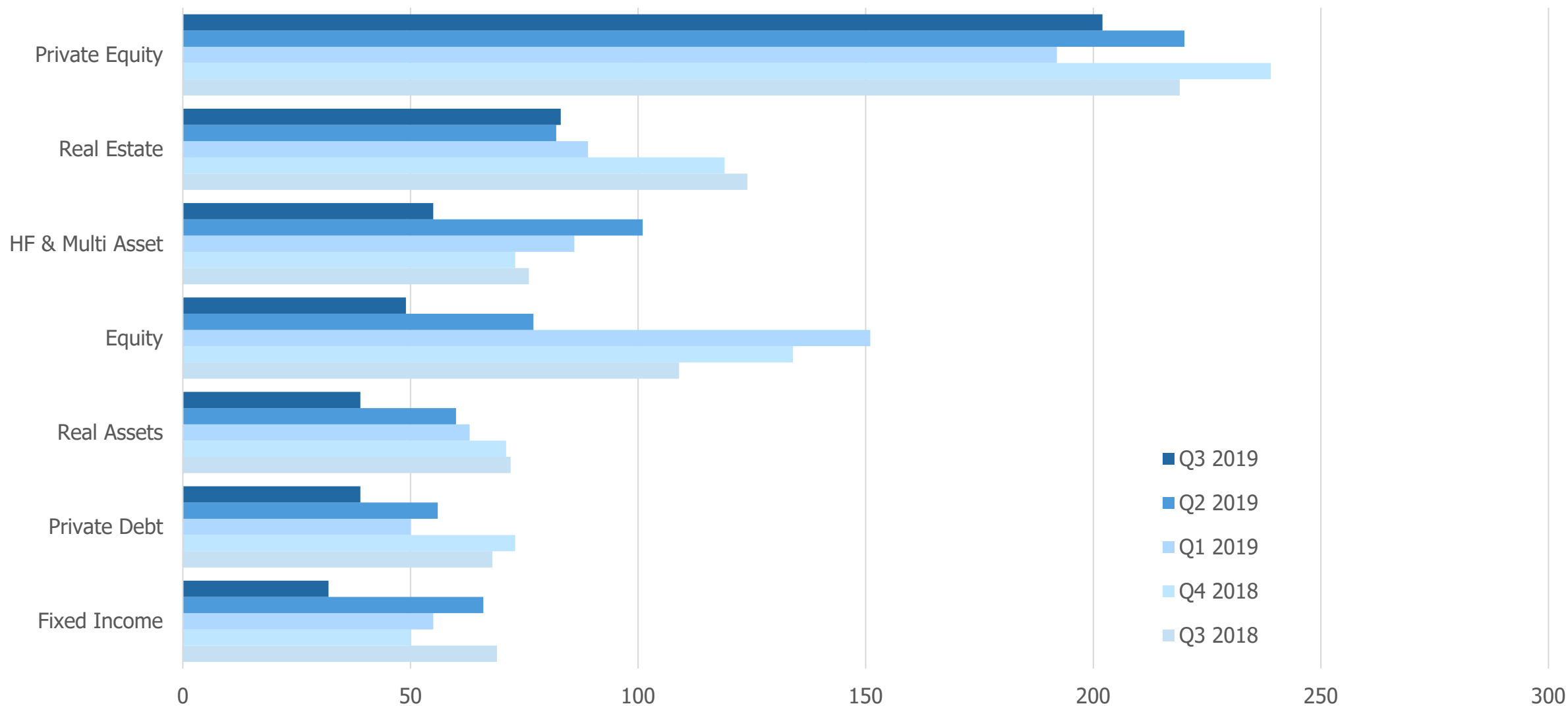
MANDATES:

TRENDS AND CURRENT OPPORTUNITIES



COMPLETED MANDATES: FOCUS ON PRIVATE EQUITY

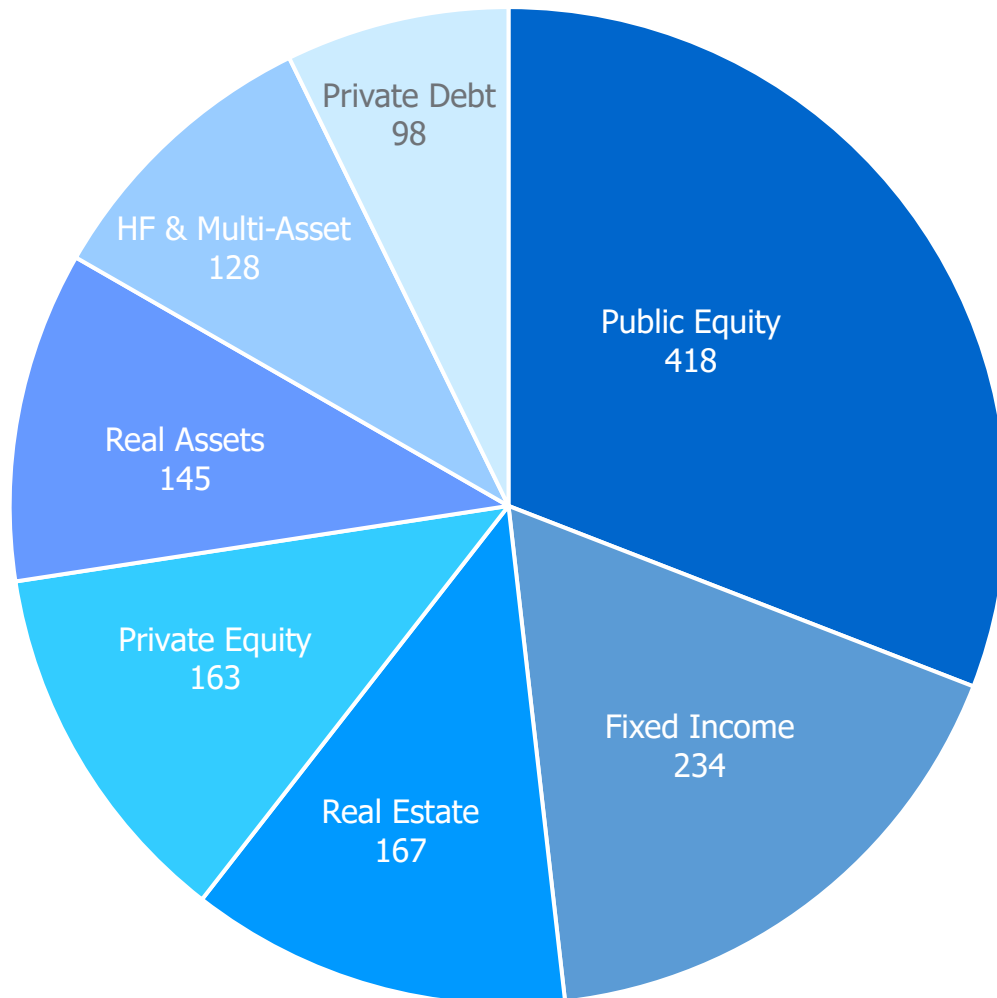
SOURCE: eVestment Market Lens – Completed Mandates Since Q3 2018





OPEN MANDATES: CURRENT OPPORTUNITIES

SOURCE: eVestment Market Lens – Open Mandates Since Q4 2018



Top Five Public Equity Open Mandate Universes

1. All Global Equity
2. US Small-Mid Cap Equity
3. All ACWI ex-US Equity
4. US Small Cap Equity
5. All Emerging Mkts Equity

Top Five Fixed Income Open Mandate Universes

1. US Core Fixed Income
2. Global Multi-Sector Fixed Income
3. All Emerging Mkts Fixed Income
4. US Core Plus Fixed Income
5. US TIPS / Inflation Fixed Income

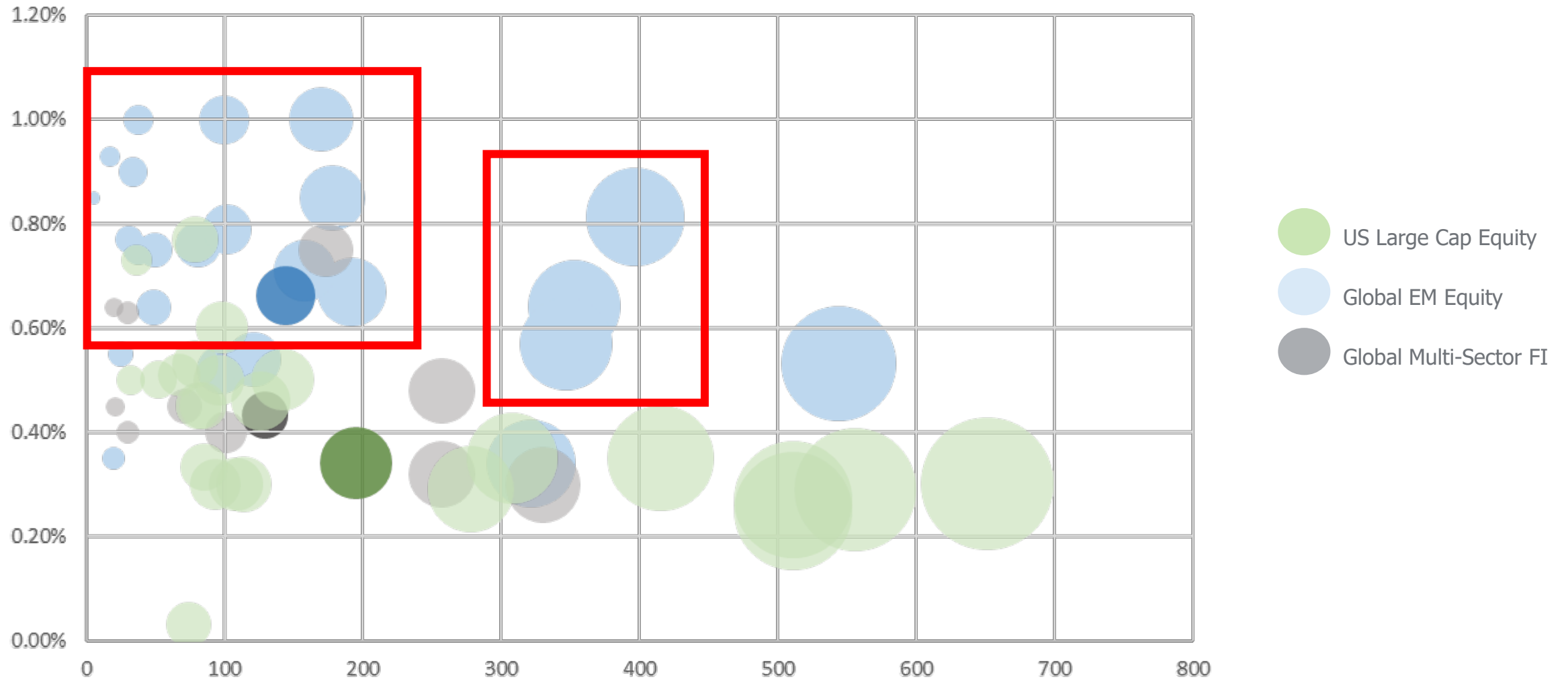


FEES

FEES CHARGED BY STRATEGY AND MANDATE SIZE IN 2019 (\$M)



SOURCE: eVestment Market Lens





Identifying Leads with Market Lens



Michael Gerson

VP Client Success
eVestment



Questions?

Submit your questions via the chat or
by email to ClaireSpencer@evestment.com

UPCOMING EVENTS

Quarterly Trends Webcast Sessions

December 11, 2019 @ 2pm EST
12 December, 2019 @ 2pm HKT
12 December, 2019 @ 2pm GMT



EVESTMENT

Institutional
Investment
Intelligence

20
20

London | **12 February**

Atlanta | **March 18-20**

THANK YOU



The leading source of institutional data and analytics globally

© 2019 eVestment Alliance, LLC. All rights reserved. The information contained herein is proprietary information of eVestment and/or its content providers and this information is for use by eVestment's intended recipients only. You may not redistribute or copy any of the material contained herein without the express, written permission of eVestment. Neither eVestment nor any of its content providers will be responsible for any damages or losses arising from any use of this information. The information contained herein for informational and research purposes only and you should not make any investment decisions relying on any of this information. "eVestment" and the E logo are registered trademarks of eVestment Alliance, LLC.